

R O CORP ET AL GRANDVIEW HILLS N
Undefined
UNKNOWN
00A476710130450

File location: K:\Kodiak\LAS\Little Chicago\Synthetics\00-A47-67-10-130-45-0.syn
KB elevation: 1212.27 ft amsl Vertical scale: 7.5 in/sec
Depth range (KB) 98.0 to 6501.0 ft MD to TVD correction: No
Depth range (SS) 1114.27 to -5288.73 ft
Time range: 0.0 to 0.7796 secs
Sample rate: 0.5 ms

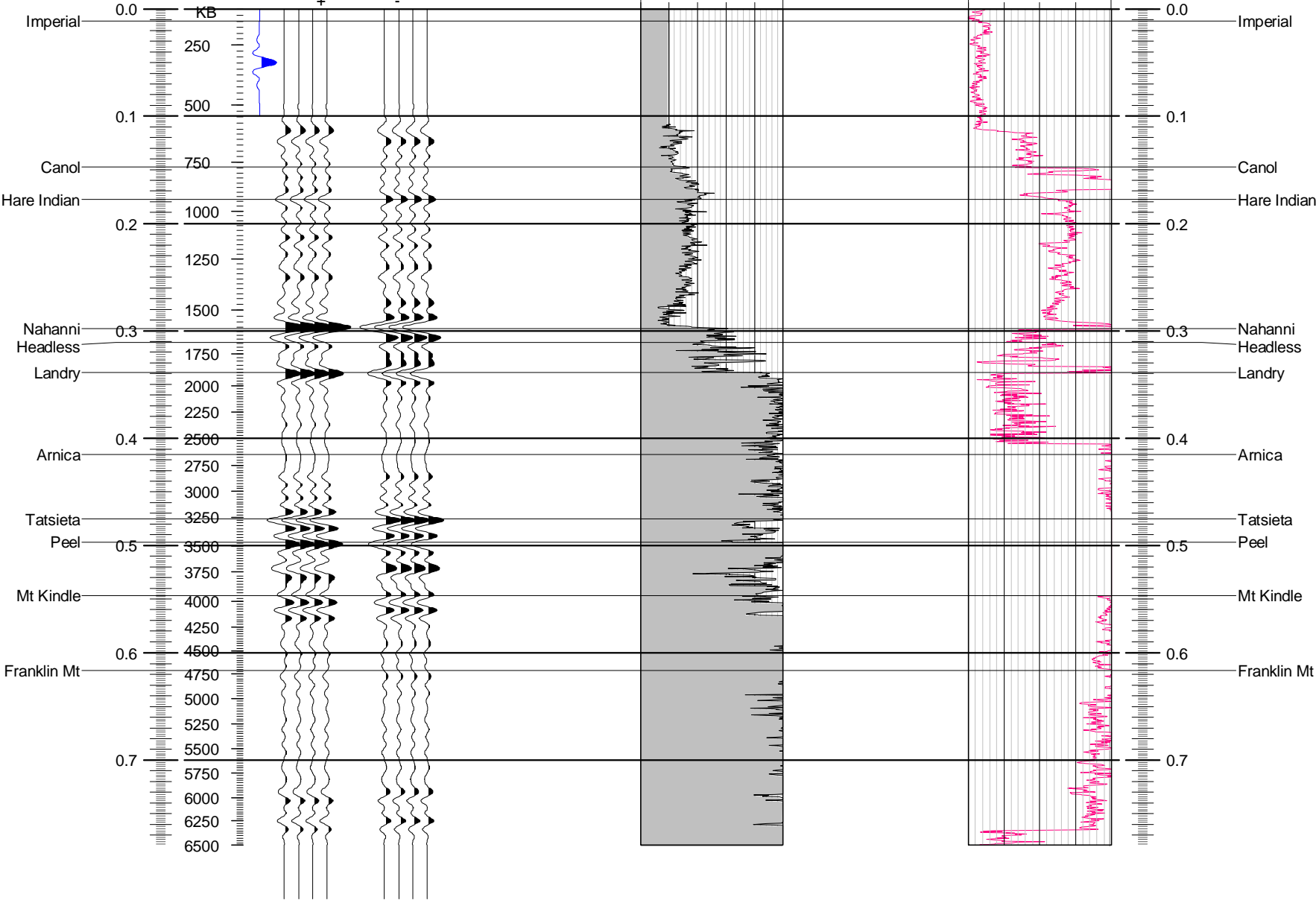
Model 26532
Type: Zero offset (P-P)
Attribute: Amplitude
RC dependency: P Son.
Filter: 10/17-70/90 0 Phase
Amp: 1.0 Tr/in: 10.0

2 SONIC INTERVAL TRANSIT TIME (NON-COMPENSATED) 3 NEUTRON GAMMA RAY

*Active

6000.0 21000.0 0.0 150.0

ft/sec api



00A476710130450

Tops	Depth KB ft	Depth SS ft	Time 2 way sec	Vav. ft/sec	Vint. ft/sec	Isochron sec	Isopach ft
Kelly bushing = 1212.27 above msl, Top of log data = 98.0 KB, Bottom of log data = 6501.0 KB. (ft)							
Tops lists: Generic tops							
Imperial	147.00	1065.27	0.01104	8879.4	9148.5	0.13620	623.00
Canol	770.00	442.27	0.14723	9128.4	11169.1	0.03044	170.00
Hare Indian	940.00	272.27	0.17767	9478.0	10633.5	0.12000	638.00
Nahanni	1578.00	-365.73	0.29767	9943.8	14134.7	0.01316	93.00
Headless	1671.00	-458.73	0.31083	10121.2	14425.2	0.02815	203.00
Landry	1874.00	-661.73	0.33898	10478.6	20278.8	0.07653	776.00
Arnica	2650.00	-1437.73	0.41551	12283.7	20551.9	0.05956	612.00
Tatsieta	3262.00	-2049.73	0.47507	13320.3	18346.9	0.02180	200.00
Peel	3462.00	-2249.73	0.49687	13540.8	19508.6	0.05003	488.00
Mt Kindle	3950.00	-2737.73	0.54690	14086.7	21812.1	0.06950	758.00
Franklin Mt	4708.00	-3495.73	0.61640	14957.8			